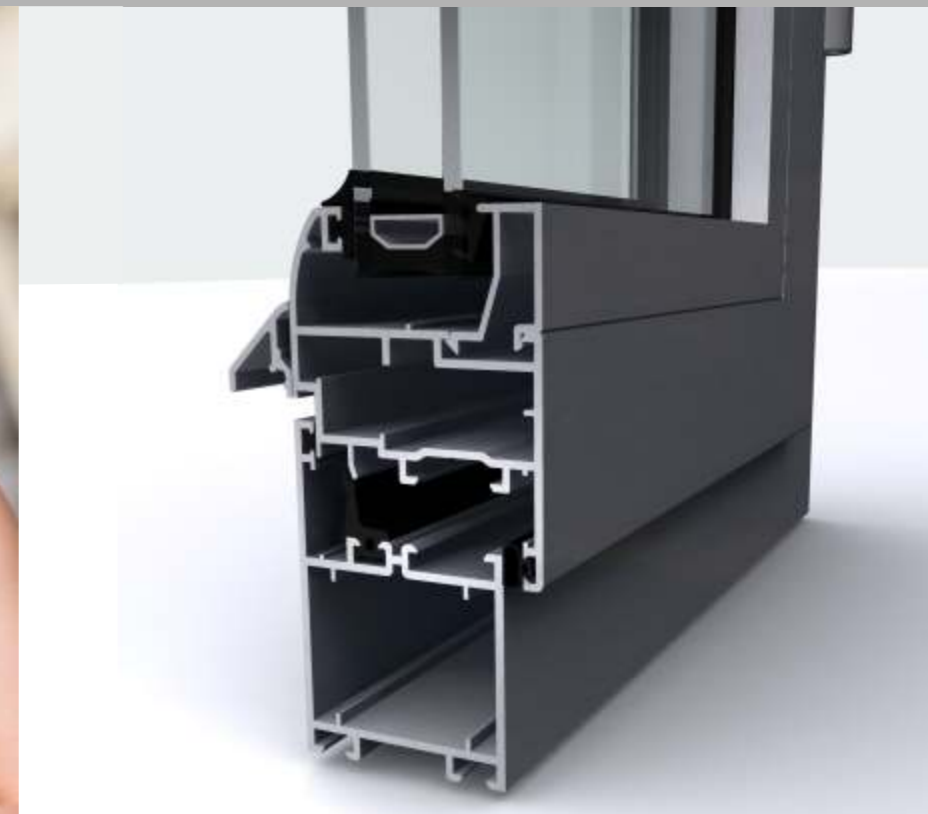


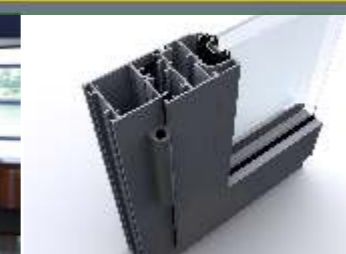


CONTEMPORARY ALUMINIUM SOLUTIONS



series **TMH**

ALUMINIUM SYSTEMS FOR WINDOWS, DOORS AND PARTITION WALLS
without thermal break



Zadržavamo pravo tehničkih promena i odstupanja od boja. © Tehnomarket d.o.o. 09/2017

TEHNOMARKET d.o.o.

Skadarska 73
26 000 Pan evo
Srbija
Tel: +381 13 307 700
Fax: +381 13 307 799
E-mail: plasman@tehnmarket.com

PROFILE SALES

Skadarska 73
26 000 Pan evo
Srbija
Tel: +381 13 307 760; 307 752
Fax: +381 13 307 799
E-mail: profil@tehnmarket.com

www.tehnmarket.com



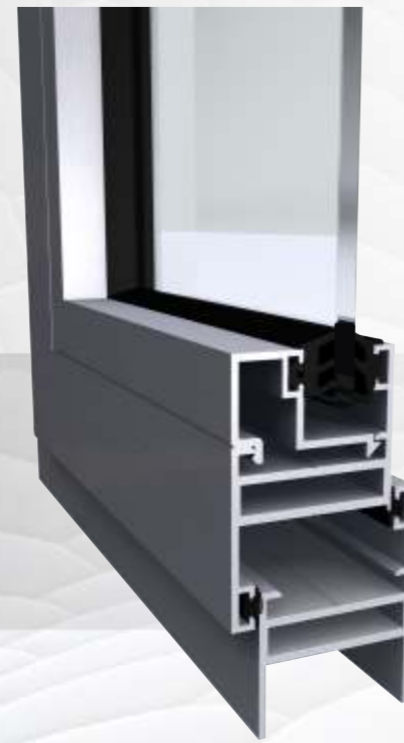
DESIGNED AND MANUFACTURED BY TEHNOMARKET



TMH45



TMHL30

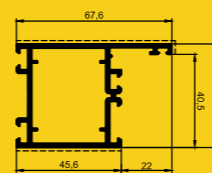
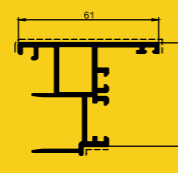
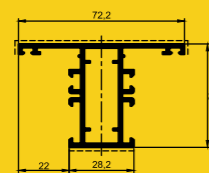
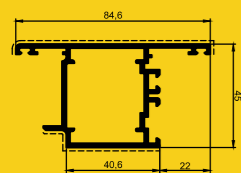


system TMH 45

TMH 45 is a system without the thermal break. It features a 45mm installaton depth and a wide range of profile solutions that provide endless possibilities in designing of both interior and exterior elements. It finds its widest application in architecture and civil engineering for production of doors, windows, partitions and portals.

System TMH 45 is designed so that it allows the application of both single-ply and double-ply glazing or other material 4-30mm thick. All of the openable element solutions feature EPDM based double sealing, providing one always being central when it comes to windows and balcony doors.

Thanks to its structural properties and a robust appearance of aluminum profiles, this system is suitable for designing the partitions and portals up to 3.5m high. Those can be added to one another on so they create a continual array, or they can form an angle of 33-200°.



SYSTEMS WITHOUT THERMAL BREAK

These systems are mostly used in interior and for installation on non-heated buildings, or in mild climate where there are no significant temperature differences between the exterior and interior. In interior, they are mostly used as solid or glass screened partitions in office spaces. Current trends in contemporary architecture evidently shift from traditional concrete and brick partition walls to attractive transparent glass screens which are now widely used in modern living and working spaces.

MODULARITY

Given their endless possibilities in combining different elements and their modularity, these systems are proven to be very flexible when it comes to interior design and outer building elements (doors, windows etc.). System TMH 45 particularly stands out for its solid constructive performance and as such, it provides a number of different custom made elements, easily combined and designed to accommodate client's specific needs.

PERFORMANCE

System TMH 45 is considered the most successful from the aesthetic point of view. It is developed for both opening and fixed large sized facade elements with highly efficient central sealing and different hardware options. All this results in variety of different possible element configurations with inward or outward opening that are compatible with the glazing or panels 4-30mm thick. During the design process, special attention is given to construction of integrated reinforced profiles that allow maximal height of fixed elements up to 3500mm.

DESIGN

A variety of profiles gives an endless number of combinations and appearances, and the two main solutions, in terms of smoothness of the geometry, make the system even more appealing to designers. All the profiles are available in two finishes: either anodized in number of colors or powder coated according to RAL color chart.



TMH45

system of aluminum profiles without thermal break

WINDOWS AND DOORS

As basic components of the system, doors and windows feature double sealing between window frame and sash and drainage system, so they can be used both in interior and exterior. The system is compatible with number of EURO 1 standard-based hardware components. Thanks to its specific design, the system offers a possibility of producing sizeable components, different configurations and ways of opening.

INTERIOR PARTITIONS

One of the most significant characteristics of the system is module-based component production and the ability to accommodate for the most specific project requests. Not only that the system provides option to produce sizeable components up to 3.5m high by using reinforced vertical profiles, but the components of the partition can also be connected at the specified angle.

SPECIAL SOLUTIONS

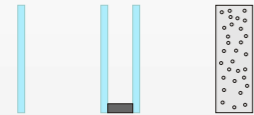
A number of profiles and the additional accessories designed under the TMH 45 name finds its application outside the production of standard geometry profiles. This system allows production of subsystems with special purpose and form, as well as two-dimensional and three-dimensional constructions as part of both interior and exterior installation, or part of independent mechanical systems.

TYPES OF ELEMENTS



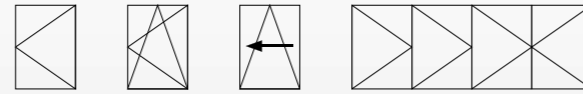
System TMH 45 supports all types of openable and fixed interior and exterior components (windows, front doors, balcony doors etc.)

GLAZING



The system allows single-ply and double-ply glass filling panels to be installed as partitions, as well as other suitable materials 4-30m wide.

OPENING OPTIONS



Depending on the type and the way of opening, finished components are easily adaptable to number of situations, in terms of client's functional requests and concept of space. There are several types of components regarding the way of opening: tilt, turn, tilt&turn, tilt&slide and folding. Number of different ways of opening, along with endless number of combinations and modularity, result in fast, easy and economical space decorating and furnishing.

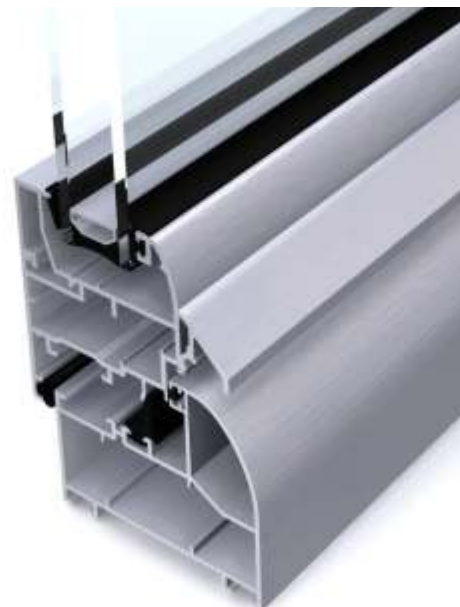
All of the components are available in two finishes: anodized in number of colors, powder coated according to RAL color chart or special wood design finish.



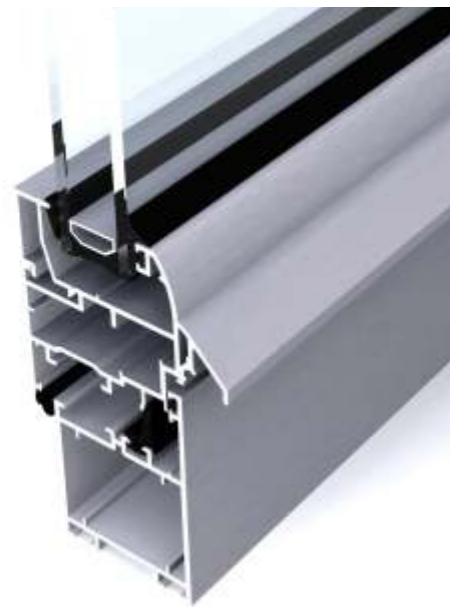
DESIGN OPTIONS

different profile shapes and modular concept offer flexible system solution for all types of projects

TMH 45 arched



TMH 45 flat



glass bead options



Thanks to the number of profile lines and the modularity, the system is ready to provide a systematical solution for everything that a complex project may demand. In order to additionally expand the concept of Tehnomarket TMH 45 line from the aesthetical point of view, two types of profiles were designed: rounded, featuring arched visible surfaces and flat, featuring planes set orthogonally to one another. In terms of functionality, there is no difference between them, but their visual distinction may tip the scale when it comes to specific project integration.

Also, there are two different glazing beads that perfectly integrate with these profile options: orthogonal and rounded.

TMH 45 doors

One of the main advantages that system TMH 45 brings is diversity of interior and exterior door types. The exterior door models provide doorstep system with the improved sealing that prevents water from penetrating into the building. The interior models come in version with no doorstep, but those are equipped with little brushes as a sealant, which also results in separating the adjacent rooms in acoustics terms. Thanks to its stable geometry and high load bearing capacity, it is possible to produce sizeable components, either single hung or double hung doors, as an independent component or as part of the portal or partition.

TMH 45 system allows application of aluminum, wood or glass as a constructive element, depending on the functional and visual parameters the room demands. In case the door consists of an aluminum frame and the adequate filling, the system allows a wider parapet aluminum profile to be installed and its dimension varies from 50mm to 155mm depending on the purpose of the particular door.

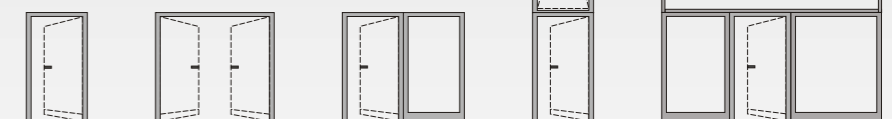
All the profiles under the name TMH 45 are EURO1 standard compatible.



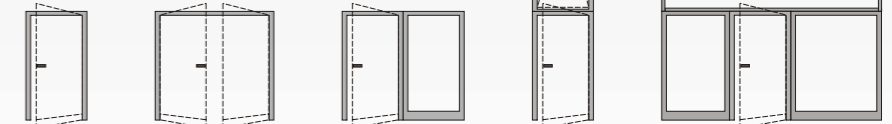
VERSATILE DOORS

Tehnomarket TMH 45 system is an optimal solution regarding all the different interior and exterior door types. Possibility of opening inward and outward, installation both with and without the doorstep, multiple designing solutions and the ability of integrating into more complexed components and glass curtain walls, as well as aluminum, wood or glass options for door panels and the sizeable maximal dimensions of the components make TMH 45 the best choice for every project.

inward opening



outward opening

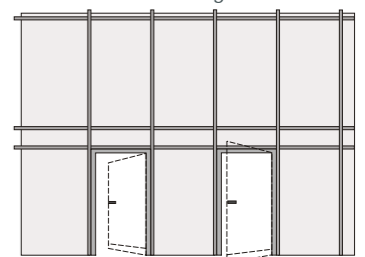


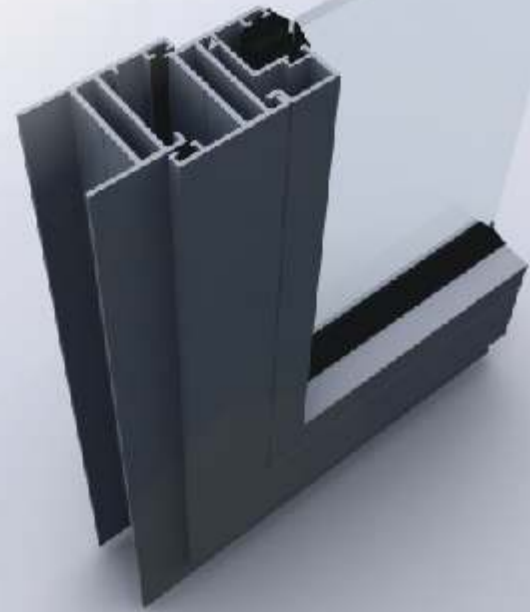
DOOR ACCESSORIES

This system allows number of options regarding the accessories to be installed: barrel, surface mounted and hidden hinges, big or small handrails, different shapes of door knobs, push bars, single-point and multi-point locks, access control systems etc. all of which can be combined in an accordance with the designer's preference.

DESIGNED AND MANUFACTURED BY TEHNOMARKET

Example of installation within the glass curtain wall





TMHL 30

Tehnomarket TMHL 30 system is the best solution for unheated and auxiliary facilities where all the attention is focused to the prevention of humidity and penetration of atmospheric agents. It has a very wide application in the climate regions where the temperature oscillations during the day are insignificant. The system supports the single-ply panels from 4-9mm thick.

TMHL 30 is an obvious answer when it comes to small-sized components and when the construction project does not demand the big openings. Along with its wide application to the auxiliary facilities, the system is often used in interior design, thanks to the light and elegant appearance of the profiles, which provides the space with the modern and minimal look, and it features exceptionally small installation depth of no more than 30mm and 66mm high frame visibility.

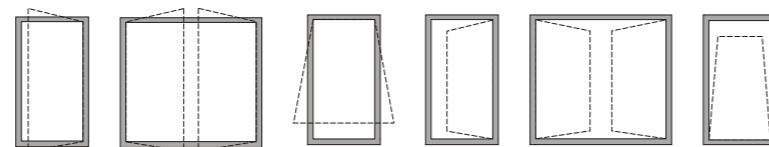


system	installation depth	glazing thickness	profile height	max. element dimensions	outward opening	inward opening
TMH 45	45-68mm	4-30mm	50-150mm	height up to 3500mm	●*	●
TMHL 30	30mm	4-9mm	66mm	1500x1100mm	●	●

* for doors only

COMPLETE SYSTEM WITH FEW PROFILES

- EFFICIENCY**
 Reduced number of light weight profiles and simple accessory solutions allow for low cost production process of system components, resulting in the small expenses of furnishing. TMHL 30 is an excellent choice for equipping of the unheated facilities with special purposes, regardless of the type of the applied insulation.
- SIMPLICITY**
 With the possibility of producing fixed and openable components in number of basic opening schemes, system's absolute functionality is achieved by combining as few as 4 profiles with 30mm installation depth and finished element dimensions not larger than 1500x1100mm.
- UNIVERSALITY**
 This system is applicable to wide range of engineering scenarios: starting with enclosing the auxiliary rooms and facilities, integration with glass curtain walls for terrace and porch spaces, furnishing of office spaces to serial production of doors and windows for warm climates.



outward opening

inward opening

INTERIOR APPLICATION EXAMPLES

